



From mountain to sea

**Aberdeenshire**  
COUNCIL



# Local Climate Impact Profile (LCLIP) 2019 – 2022

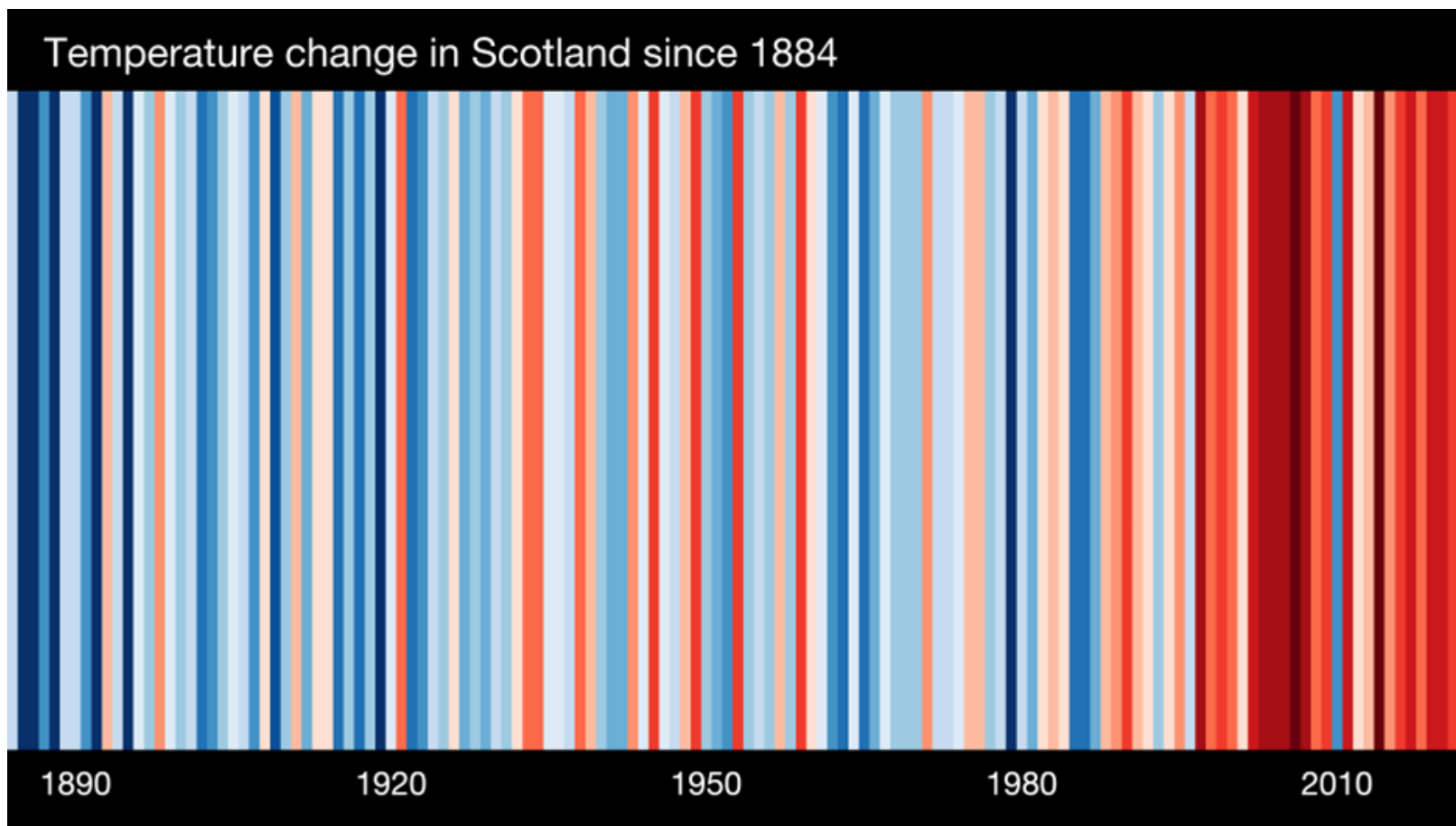
**Tara Murray**  
Sustainability and Climate Change Officer

30 August 2023



From mountain to sea

## Scotland's climate is changing





From mountain to sea



## Introduction

### What is an LCLIP and why do we need one?

*The LCLIP tool was developed by the UK Climate Impacts Programme (UKCIP) to assist local authorities and organisations to assess their exposure and vulnerability to past weather events, as a step towards preparing for future risks.*

- To develop a story and **raise awareness** of the impact of weather events and the need to adapt and build resilience to these.
- To consolidate existing evidence to provide an evidence base for **future actions**.
- To provide **recommendations** for improving the preparedness of Aberdeenshire Council for extreme weather events.



From mountain to sea

**Aberdeenshire**  
COUNCIL



# Introduction

## Events of 2019 - 2022

- Number of extreme weather events and intensity of their impacts
- United Kingdom withdrawal from the European Union
- Impact of COVID-19 pandemic
- Russia's invasion of Ukraine



*Storm damage to woodland and a police car hit by a fallen tree following Storm Arwen in November 2021*



From mountain to sea

# Methodology

## Data Collection

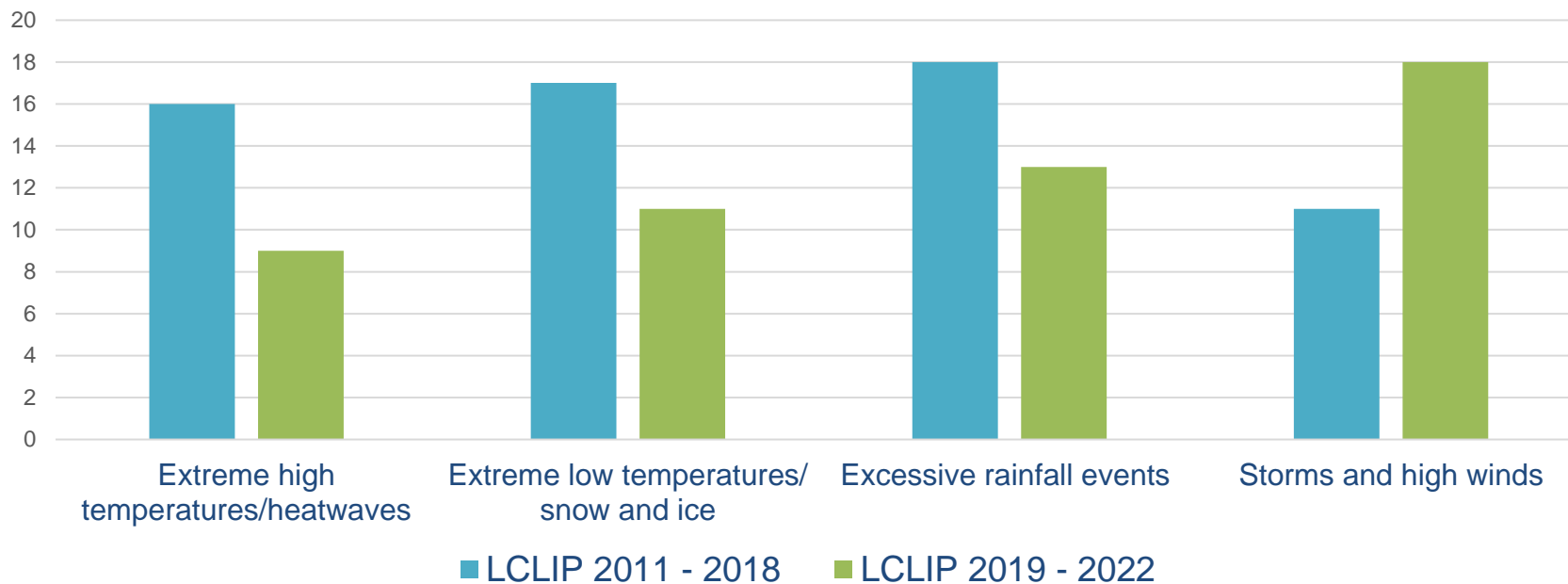
- A media trawl.
- UKCIP, Climate Change Committee (CCC) and Met Office data.
- Adaptation Scotland Capability Benchmarking Framework submissions.
- Annual Public Bodies Duties Climate Change Reports.
- Bellwin Scheme 2021 - 2022 and 2023 - 2024 Reports.
- Employee Climate Change Adaptation and Resilience Questionnaire (74).
- Employee Climate Change Adaptation and Resilience Interviews (14).



From mountain to sea

## Results

2019 to 2022 saw more extreme weather events per year than the previous LCLIP period of 2012 to 2018, including 18 storms in a 4-year period compared to 11 storms in the 8-year period of 2011 – 2018.







From mountain to sea

**Aberdeenshire**  
COUNCIL



## Results

Between 1<sup>st</sup> January 2019 and 31<sup>st</sup> December 2022



**9** Extreme high temperatures/heatwaves



**13** Excessive rainfall events



**11** Extreme low temperatures/ snow and ice



**18** Storms and high winds





From mountain to sea

## Results

### Most frequent impacts to Council Services

- Damage to council buildings, housing stock, infrastructure, land, vegetation local ecosystems and biodiversity.
- Disruption to and an increase in demand for services.
- Financial costs.
- Risk to employees and public health and wellbeing.
- An increase in engagement and support to communities.

**31 hectares**  
of woodland  
damaged

**7 storms**  
Nov 2019 to  
Feb 2022

**£1.075 million**  
cost of storms  
alone

**Stonehaven  
Derailment**  
August 2021





From mountain to sea

**Aberdeenshire**  
COUNCIL



## Results

### Council Directorates and Services most impacted



**Business Services** (Customer & Digital, Finance, Legal & People, Property & Facilities, Risk & Resilience)



**Education and Children's Services** (Education, Live Life Aberdeenshire)



**Environment and Infrastructure Services** (Environment & Sustainability, Housing & Building Standards, Planning & Economy, Roads & Infrastructure)



**Health and Social Care Partnership** (Health & Social Care)



From mountain to sea

**Aberdeenshire**  
COUNCIL



## Recommendations and Next Steps

### 2019 – 2022 LCLIP Recommendations

1. Climate change adaptation and resilience **training programme**
2. **Management plan or model** to ensure all extreme weather events are given equal prioritisation.
3. **Cost code** to capture costs from all extreme weather events and a **central fund** for climate change costs and adaptation measures.
4. **Employee redeployment and volunteer programme** for extreme weather events.
5. Adaptation and resilience **communication and engagement plan for communities.**



From mountain to sea

**Aberdeenshire**  
COUNCIL



# Recommendations and Next Steps

## Next Steps

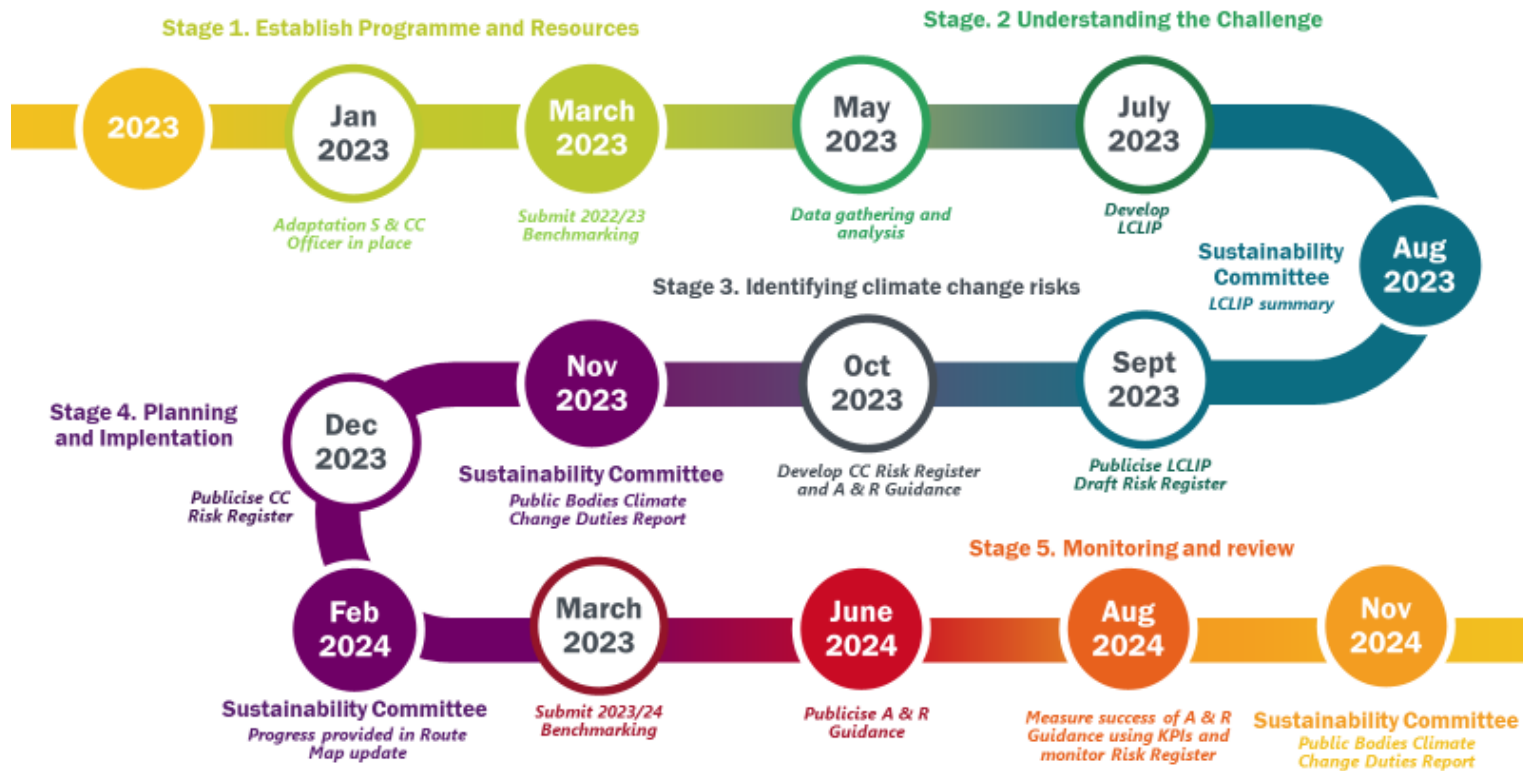
- **Discuss recommendations** with the Risk and Resilience Team and leaders and at meetings and committees, and if approved, agree an **action plan**.
- Finalise the **Climate Ready Aberdeenshire Strategy** considering the results and recommendations within this report.
- Further embed adaptation, resilience, and climate change risk by **supporting services** with identifying and managing risks, with the support of the **Sustainability Champions**.
- **Share the results** of Employee Climate Change Adaptation and Resilience questionnaire and interviews across the Council.
- Continue with the long-term **Climate Adaptation and Resilience Programme**.



From mountain to sea

# Recommendations and Next Steps

## Adaptation and Resilience Programme Route Map





From mountain to sea

**Aberdeenshire**  
COUNCIL



***As a Council we have a crucial role to play in enabling our region to adapt to climate change and extreme weather events and increase our resilience to their impacts.***

Any questions?





From mountain to sea

**Aberdeenshire**  
COUNCIL



## Contact

**Tara Murray**

Sustainability and Climate Change Officer

[Tara.murray2@aberdeenshire.gov.uk](mailto:Tara.murray2@aberdeenshire.gov.uk)

[sustainability@aberdeenshire.gov.uk](mailto:sustainability@aberdeenshire.gov.uk)

Thank you